

Exposer To Top 15 Automotive Companies In USA

CONTACT US

✉ SUPPORT@OPENKYBER.COM

📞 [+1 \(818\) 665-3339](tel:+1(818)665-3339)

📍 [1 CHISHOLM TRAIL RD STE
450 ROUND ROCK, TX, USA,
78681.](#)



1. General Motors (GM)



Employees vs Contractors

Approximately 155,000 employees and contractors globally, specializing in automotive manufacturing and services.



Major Office Locations

HQ: Renaissance Center, Detroit, Michigan, USA.



Key Softwares

Utilizes SAP, Salesforce, Microsoft Dynamics, and specialized automotive design and manufacturing tools.



Business Partners

- B2B: Automotive parts supply, fleet management, and commercial vehicle solutions.
- B2C: Vehicle manufacturing, sales, financing, and after-sales services for consumers.



Industry Compliance

Adheres to SEC, GDPR (for EU operations), EPA regulations, and automotive safety standards. Basel III and FINRA are not directly applicable.





2. Ford Motor Company



Employees vs Contractors

Approximately 183,000 employees and contractors globally, specializing in automotive manufacturing and services.



Major Office Locations

HQ: Ford World Headquarters, Dearborn, Michigan, USA.



Key Softwares

Utilizes SAP, Salesforce, Microsoft Dynamics, and specialized automotive design and manufacturing tools.



Business Partners

- B2B: Automotive parts supply, fleet management, and commercial vehicle solutions.
- B2C: Vehicle manufacturing, sales, financing, and after-sales services for consumers.



Industry Compliance

Adheres to SEC, GDPR (for EU operations), EPA regulations, and automotive safety standards. Basel III and FINRA are not directly applicable.





TESLA

3. Tesla, Inc.



Employees vs Contractors

Approximately 127,000 employees and contractors globally, specializing in electric vehicle manufacturing, energy solutions, and technology.



Business Partners

- B2B: Battery suppliers, energy storage solutions, and commercial fleet solutions.
- B2C: Electric vehicle manufacturing, sales, financing, and energy storage products for individual consumers.



Major Office Locations

HQ: Palo Alto, California, USA (Tesla is moving its headquarters to Texas).



Key Softwares

Utilizes SAP, Salesforce, proprietary Tesla software for vehicle management, autopilot systems, and energy solutions.



Industry Compliance

Adheres to SEC regulations, GDPR (for EU operations), EPA regulations, automotive safety standards, and other relevant compliance measures. Basel III and FINRA are not directly applicable to their operations.



4. Stellantis North America



Employees vs Contractors

Approximately 80,000 employees and contractors globally, specializing in automotive manufacturing, engineering, and services.



Major Office Locations

HQ: Auburn Hills, Michigan, USA.



Key Softwares

Utilizes SAP, Salesforce, Microsoft Dynamics, and specialized automotive design and manufacturing tools.



Business Partners

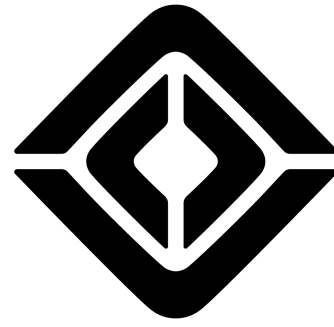
- B2B: Automotive parts suppliers, fleet management companies, and commercial vehicle solutions.
- B2C: Vehicle manufacturing, sales, financing, and after-sales services for individual consumers.



Industry Compliance

Adheres to SEC regulations, GDPR (for EU operations), EPA regulations, automotive safety standards, and other relevant compliance measures. Basel III and FINRA are not directly applicable to their operations.





RIVIAN

5. Rivian



Employees vs Contractors

Approximately 14,000 employees and contractors globally, specializing in electric vehicle manufacturing and technology.



Business Partners

- B2B: Battery suppliers, fleet management companies, and commercial electric vehicle solutions.
- B2C: Electric vehicle manufacturing, sales, financing, and after-sales services for individual consumers.



Major Office Locations

HQ: Plymouth, Michigan, USA.



Key Softwares

Utilizes SAP, Salesforce, and proprietary software for vehicle management, energy solutions, and advanced vehicle technologies.



Industry Compliance

Adheres to SEC regulations, GDPR (for EU operations), EPA regulations, automotive safety standards, and other relevant compliance measures. Basel III and FINRA are not directly applicable to their operations.





6. Fisker Automotive



Employees vs Contractors

Approximately 500 employees and contractors globally, specializing in electric vehicle manufacturing and design.



Business Partners

- B2B: Battery suppliers, electric vehicle components suppliers, and charging infrastructure providers.
- B2C: Electric vehicle manufacturing, sales, financing, and after-sales services for individual consumers.



Major Office Locations

HQ: Manhattan Beach, California, USA.



Key Softwares

Utilizes SAP, Salesforce, and proprietary software for vehicle design, manufacturing, and energy management.



Industry Compliance

Adheres to SEC regulations, GDPR (for EU operations), EPA regulations, automotive safety standards, and other relevant compliance measures. Basel III and FINRA are not directly applicable to their operations.



7. Lucid Motors

LUCID



Employees vs Contractors

Approximately 7,000 employees and contractors globally, specializing in electric vehicle manufacturing and technology.



Business Partners

- B2B: Battery suppliers, electric vehicle components suppliers, and charging infrastructure providers.
- B2C: Electric vehicle manufacturing, sales, financing, and after-sales services for individual consumers.



Major Office Locations

HQ: Newark, California, USA.



Key Softwares

Utilizes SAP, Salesforce, and proprietary software for vehicle design, manufacturing, and advanced vehicle technologies.



Industry Compliance

Adheres to SEC regulations, GDPR (for EU operations), EPA regulations, automotive safety standards, and other relevant compliance measures. Basel III and FINRA are not directly applicable to their operations.



8. BorgWarner



Employees vs Contractors

Approximately 50,000 employees and contractors globally, specializing in automotive powertrain and emissions solutions.



Business Partners

- B2B: Automotive OEMs, powertrain and emissions component suppliers, and automotive technology providers.
- B2C: Indirectly through the supply of vehicle components for consumer vehicles, focusing on performance, fuel efficiency, and emissions control.



Major Office Locations

HQ: Auburn Hills, Michigan, USA.



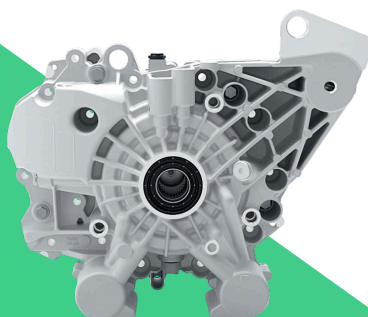
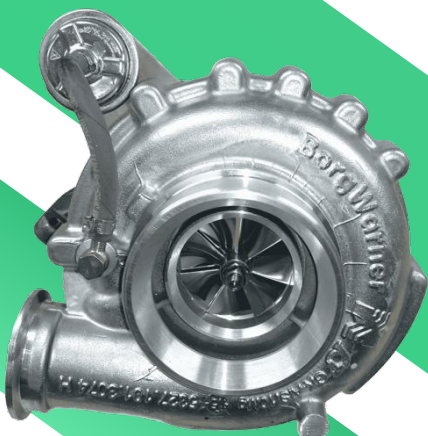
Key Softwares

Utilizes SAP, Salesforce, and specialized software for automotive design, manufacturing, and powertrain management.



Industry Compliance

Adheres to SEC regulations, GDPR (for EU operations), EPA regulations, automotive safety standards, and other relevant compliance measures. Basel III and FINRA are not directly applicable to their operations.



9. Autoliv

Autoliv



Employees vs Contractors

Approximately 70,000 employees and contractors globally, specializing in automotive safety systems.



Business Partners

- B2B: Automotive OEMs, safety component suppliers, and technology providers.
- B2C: Indirectly through the supply of safety components for consumer vehicles, including airbags, seatbelts, and other safety systems.



Major Office Locations

HQ: Stockholm, Sweden.



Key Softwares

Utilizes SAP, Salesforce, and specialized software for automotive safety system design and manufacturing.



Industry Compliance

Adheres to SEC regulations, GDPR (for EU operations), automotive safety standards, and other relevant compliance measures. Basel III and FINRA are not directly applicable to their operations.



10. Lear Corporation



Employees vs Contractors

Approximately 170,000 employees and contractors globally, specializing in automotive seating and electrical systems.



Major Office Locations

HQ: Southfield, Michigan, USA.



Key Softwares

Utilizes SAP, Salesforce, and specialized software for automotive seating and electrical system design and manufacturing.



Business Partners

- B2B: Automotive OEMs, suppliers of seating components, electrical systems, and connected vehicle technologies.
- B2C: Indirectly through the supply of seating and electrical components for consumer vehicles, enhancing comfort, safety, and vehicle connectivity.



Industry Compliance

Adheres to SEC regulations, GDPR (for EU operations), automotive safety standards, and other relevant compliance measures. Basel III and FINRA are not directly applicable to their operations.





11. Visteon



Employees vs Contractors

Approximately 10,000 employees and contractors globally, specializing in automotive electronics and connected vehicle solutions.



Business Partners

- B2B: Automotive OEMs, suppliers of vehicle infotainment systems, cockpit electronics, and connected vehicle technologies.
- B2C: Indirectly through the supply of advanced electronics for consumer vehicles, enhancing infotainment, safety, and driver experience.



Major Office Locations

HQ: Van Buren Township, Michigan, USA.



Key Softwares

Utilizes SAP, Salesforce, and specialized software for automotive electronics and connected vehicle system design and manufacturing.



Industry Compliance

Adheres to SEC regulations, GDPR (for EU operations), automotive safety standards, and other relevant compliance measures. Basel III and FINRA are not directly applicable to their operations.



12. Magna International (U.S. Operations)



Employees vs Contractors

Approximately 158,000 employees and contractors globally, specializing in automotive manufacturing, engineering, and systems integration.



Business Partners

- B2B: Automotive OEMs, suppliers of powertrain systems, electronics, and safety components.
- B2C: Indirectly through the supply of vehicle components for consumer vehicles, enhancing performance, safety, and efficiency.



Major Office Locations

HQ: Troy, Michigan, USA.



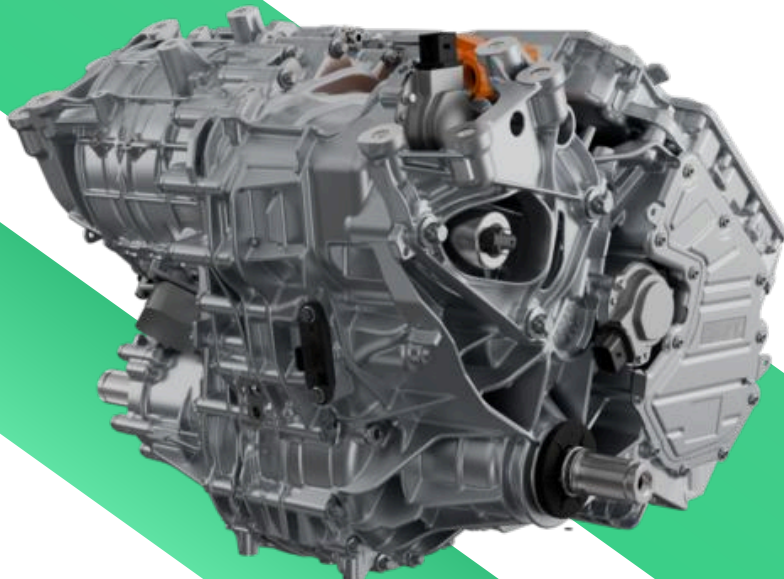
Key Softwares

Utilizes SAP, Salesforce, and specialized software for automotive design, manufacturing, and systems integration.



Industry Compliance

Adheres to SEC regulations, GDPR (for EU operations), automotive safety standards, and other relevant compliance measures. Basel III and FINRA are not directly applicable to their operations.



13. Tenneco



Employees vs Contractors

Approximately 78,000 employees and contractors globally, specializing in automotive parts, including emission control and ride performance technologies.



Business Partners

- B2B: Automotive OEMs, suppliers of emission control systems, and ride performance technologies.
- B2C: Indirectly through the supply of components for consumer vehicles, improving vehicle performance, emissions, and safety.



Major Office Locations

HQ: Lake Forest, Illinois, USA.



Key Softwares

Utilizes SAP, Salesforce, and specialized software for automotive parts design, manufacturing, and performance management.



Industry Compliance

Adheres to SEC regulations, GDPR (for EU operations), automotive safety standards, and environmental regulations like EPA. Basel III and FINRA are not directly applicable to their operations.



14. Dana Incorporated



Employees vs Contractors

Approximately 39,000 employees and contractors globally, specializing in drivetrain, sealing, and thermal management solutions for the automotive and commercial vehicle industries.



Major Office Locations

HQ: Maumee, Ohio, USA.



Key Softwares

Utilizes SAP, Salesforce, and specialized software for drivetrain and thermal management system design.



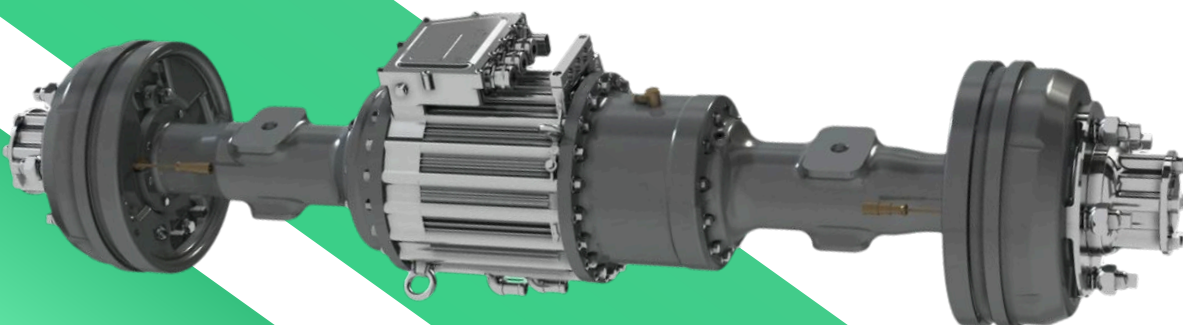
Business Partners

- B2B: Automotive OEMs, suppliers of drivetrain, sealing, and thermal management technologies.
- B2C: Indirectly through the supply of vehicle components, improving performance, fuel efficiency, and emissions control.



Industry Compliance

Adheres to SEC regulations, GDPR (for EU operations), automotive safety standards, and environmental regulations. Basel III and FINRA are not directly applicable to their operations.



15. American Axle & Manufacturing



Employees vs Contractors

Approximately 17,000 employees and contractors globally, specializing in drivetrain components and systems for the automotive industry.



Business Partners

- B2B: Automotive OEMs, suppliers of drivetrain systems, axle and powertrain components.
- B2C: Indirectly through the supply of vehicle components, enhancing performance, efficiency, and safety.



Major Office Locations

HQ: Detroit, Michigan, USA.



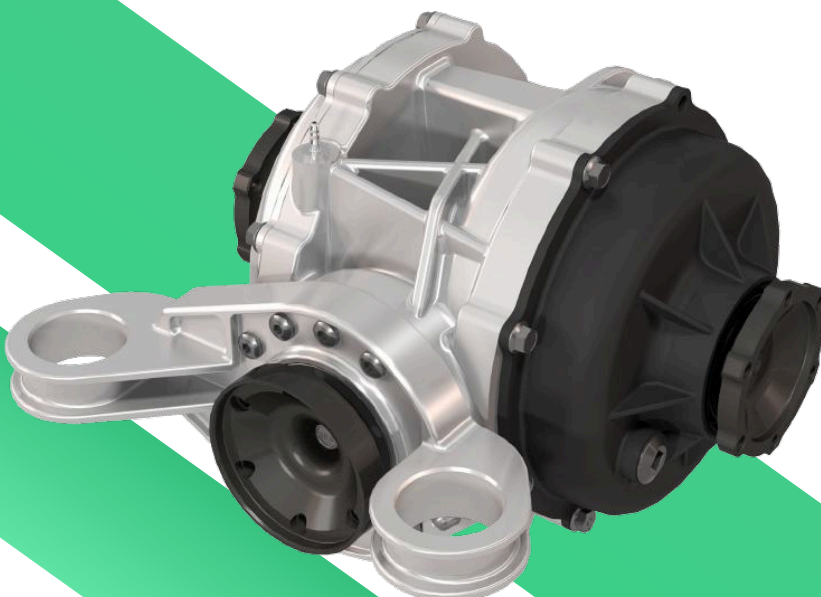
Key Softwares

Utilizes SAP, Salesforce, and specialized software for drivetrain and powertrain system design and manufacturing.



Industry Compliance

Adheres to SEC regulations, GDPR (for EU operations), automotive safety standards, and environmental regulations. Basel III and FINRA are not directly applicable to their operations.



Thank You!



CONTACT US

✉ SUPPORT@OPENKYBER.COM

📞 +1 (818) 665-3339

📍 [1 CHISHOLM TRAIL RD STE
450 ROUND ROCK, TX, USA,
78681.](#)